

Drug Information Sheet("Kusuri-no-Shiori")

Internal

Published: 09/2017

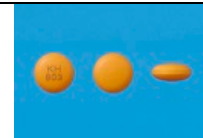
The information on this sheet is based on approvals granted by the Japanese regulatory authority. Approval details may vary by country. Medicines have adverse reactions (risks) as well as efficacies (benefits). It is important to minimize adverse reactions and maximize efficacy. To obtain a better therapeutic response, patients should understand their medication and cooperate with the treatment.

Brand name: ACETYLSPIRAMYCIN Tablets 100

Active ingredient: Spiramycin acetate

Dosage form: yellowish orange tablet, diameter: 8.1 mm, thickness: 3.6 mm

Print on wrapping: KH803 100 mg アセチルスピラマイシン AcetylSpiramycin



Effects of this medicine

This medicine is a macrolide antibiotic, inhibits protein synthesis of bacteria and suppresses the growth of bacteria causing inflammation (fever, pain or swelling).

It is usually used in the treatment of bacterial infections such as skin infections, respiratory infections, sexually-transmitted infections and otolaryngology infections.

Before using this medicine, be sure to tell your doctor and pharmacist

- If you have previously experienced any allergic reactions (itch, rash, etc.) to any medicines.
If you have liver disorder or renal disorder.
- If you are pregnant or breastfeeding.
- If you are taking any other medicinal products. (Some medicines may interact to enhance or diminish medicinal effects. Beware of over-the-counter medicines and dietary supplements as well as other prescription medicines.)

Dosing schedule (How to take this medicine)

- Your dosing schedule prescribed by your doctor is((to be written by a healthcare professional))
- In general, for adults, take 2 tablets [200 mg (titer) of the active ingredient] at a time, 4 to 6 times a day. The dosage may be adjusted according to your age/symptoms. Strictly follow the instructions.
- If you miss a dose, take a dose as soon as possible. If it is almost time for the next dose, skip the missed dose and continue your regular dosing schedule. You should never take two doses at one time.
- If you accidentally take more than your prescribed dose, consult with your doctor or pharmacist.
- Do not stop taking this medicine unless your doctor instructs you to do so.

Precautions while taking this medicine

Possible adverse reactions to this medicine

The most commonly reported adverse reactions include loss of appetite, nausea/vomiting, rash/redness of skin, diarrhea, and stomach discomfort. If any of these symptoms occur, consult with your doctor or pharmacist.

The symptoms described below are rarely seen as initial symptoms of the adverse reactions indicated in brackets. If any of these symptoms occur, stop taking this medicine and see your doctor immediately.

No pertinent entries.

The above symptoms do not describe all the adverse reactions to this medicine. Consult with your doctor or pharmacist if you notice any symptoms of concern other than those listed above.

Storage conditions and other information

- Keep out of the reach of children. Store away from direct sunlight, heat and moisture.
- Discard the remainder. Do not store them.

For healthcare professional use only / /

For further information, talk to your doctor or pharmacist.